



Structural Analysis & Design Software

www.dlubal.com



Dipl.-Ing. (FH) Andreas Hörold
Organizer

Marketing & Public Relations
Dlubal Software GmbH



Stefan Hoffmann, M.Sc.
Co-Organizer

Product Engineering & Customer Support
Dlubal Software GmbH



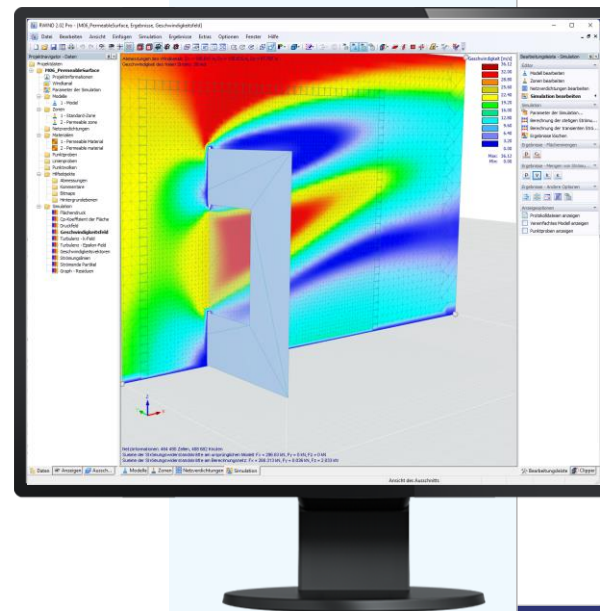
Dipl.-Ing. (BA) Andreas Niemeier, M.Eng.
Co-Organizer

Head of Product Engineering
Dlubal Software GmbH

Webinar

Wind Simulation in RWIND 2:

Modeling, Wind Load Generation, and Documentation



Questions During the Presentation



GoToWebinar Control Panel
Desktop



E-mail: info@dlubal.com



Show or hide control panel



The screenshot shows the GoToWebinar control panel interface. At the top, there is a menu bar with 'File', 'View', and 'Help'. Below it is the 'Audio' section, which includes a 'Sound Check' indicator with a green bar and a question mark. There are two radio buttons: 'Computer audio' (selected) and 'Phone call'. A red 'MUTED' indicator is visible. Below this, there are dropdown menus for 'Mikrofon (2- Sennheiser USB h...)' and 'Lautsprecher (2- Sennheiser U...'. A volume slider is also present. The 'Questions' section is below the audio settings, featuring a text input field with the placeholder '[Enter a question for staff]' and a 'Send' button. At the bottom, the 'Webinar ID: 373-901-987' and the 'GoToWebinar' logo are displayed.



Adjust audio settings

Ask questions



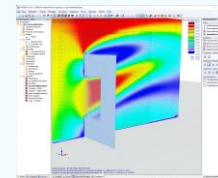
CONTENT

01 Overview of the new features in RWIND 2.02 Pro

02 Wind Analysis in RWIND 2 Pro

03 Wind Analysis in RWIND 2 Pro in connection with RFEM 6

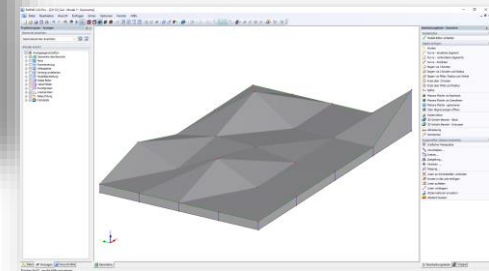
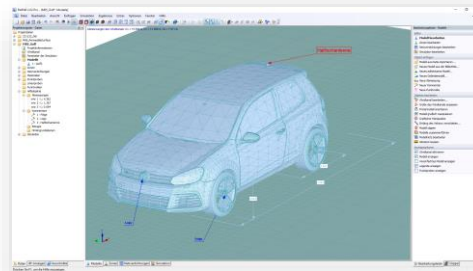
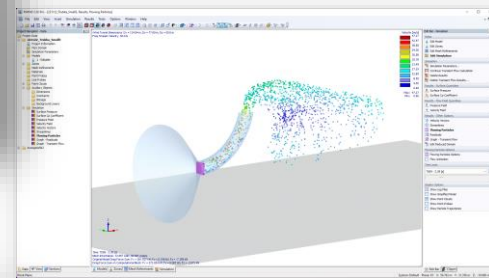
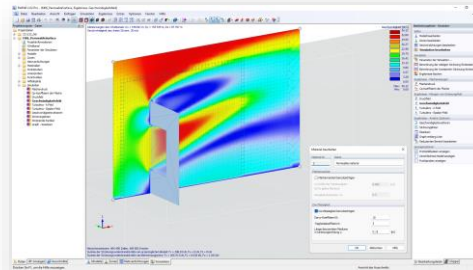
04 Prospect





New Features in RWIND 2.02 Pro

- Permeable Surfaces
- Load factor for Zones
- Point Clouds/ Flowing Particles
- Convergence Criterion – New Residual Type “Drag Force Difference”
- Extended Model Information
- New Auxiliary Objects
- Graphic Model Editor





Permeable surfaces

Definition of Parameters

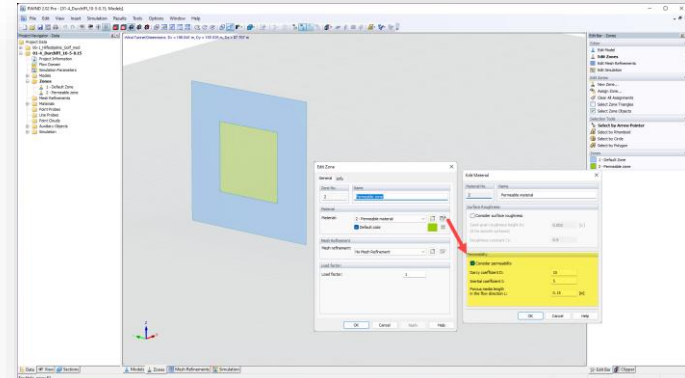
D	Darcy Coefficient
I	Inertial Coefficient
L	Permeable media length in the flow direction

$$D = \frac{1}{\alpha} \quad I = \frac{C_F}{\sqrt{\alpha}}$$

α ... Permeability [m²]

C_F ... Forchheimer Parameter

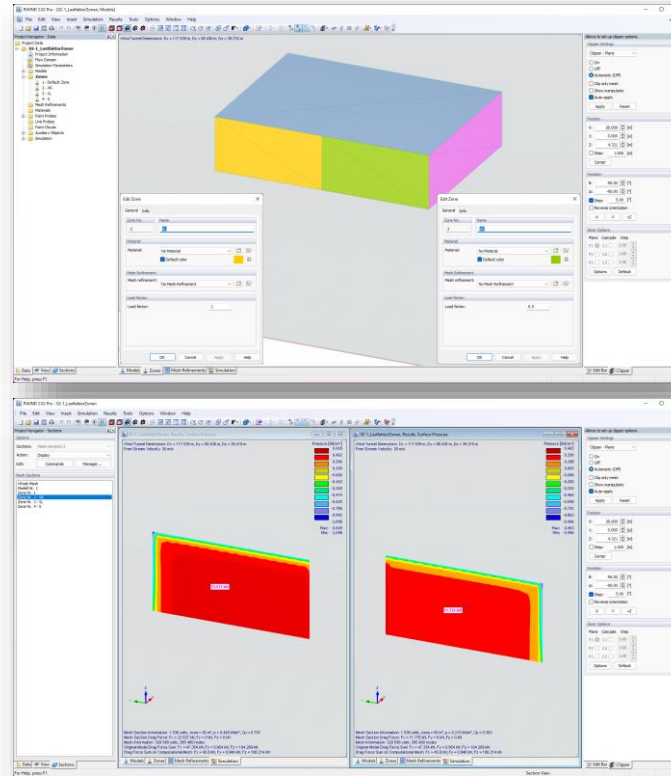
- Boundary condition, a prescribed pressure drop on defined surfaces
- No fine modelling/ meshing of the permeable structure necessary
- Simulation of permeable scaffolding tarpaulins, dust protection curtains and mesh constructions





Load factor for Zones

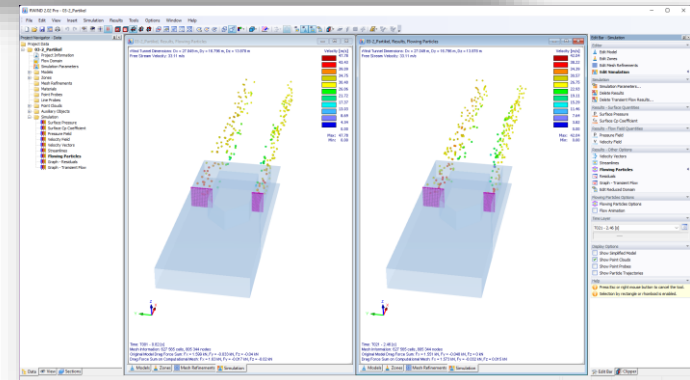
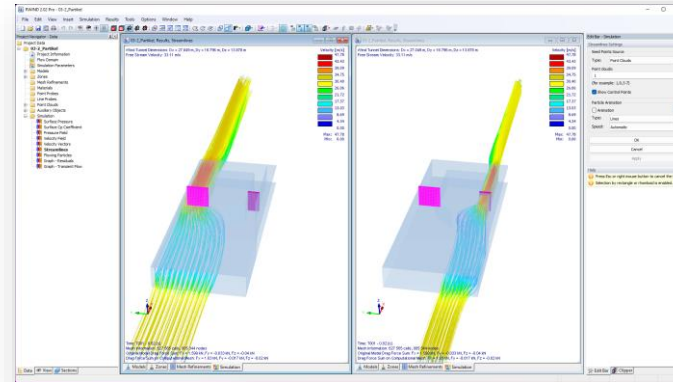
- Post processing factor by which the resulting load of a zone can be multiplied
- Ability to increase/ decrease loads on custom model areas





Point Clouds/ Flowing Particles

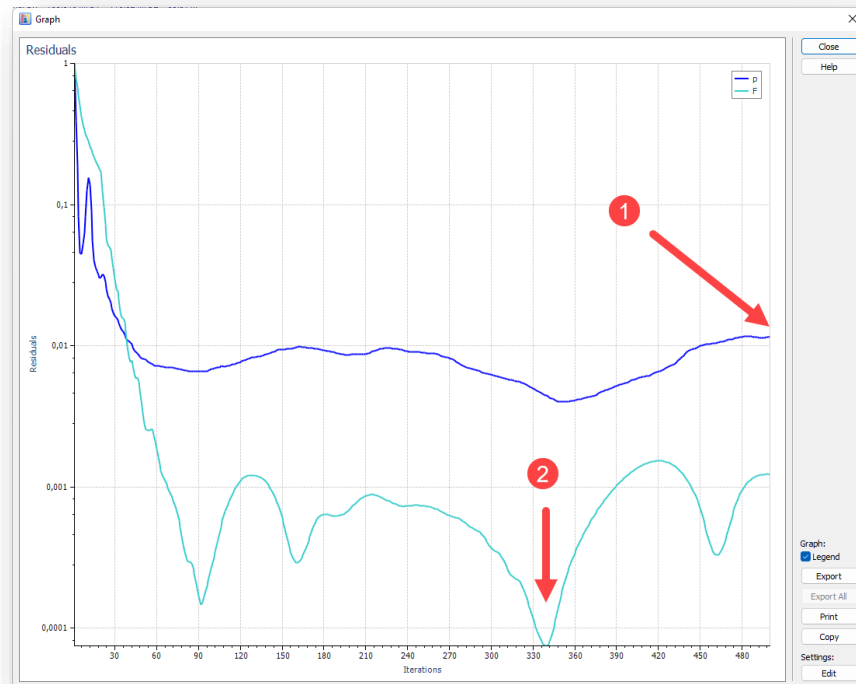
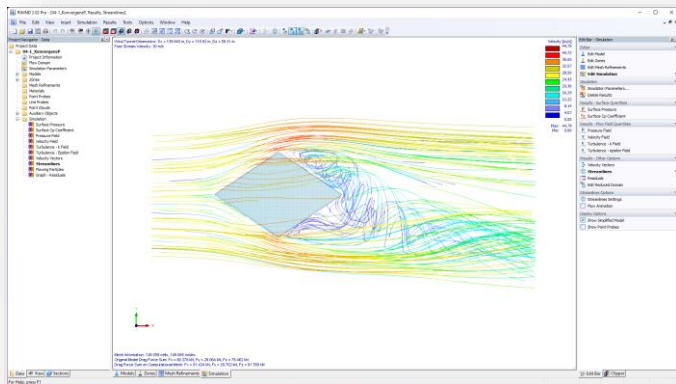
- Point Clouds
 - Sources for the generation of streamlines or flowing particles
- Flowing Particles
 - Can be traced in the transient calculation
 - Display in any time layer





Convergence

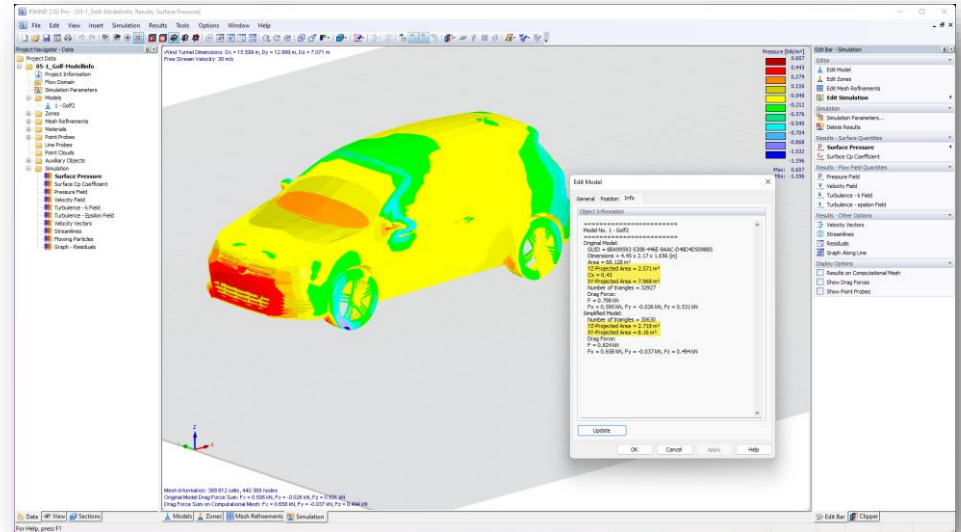
- Stop limit for the calculation
- New type "Difference in drag force"
 - Related to the primary model





Extended Model Information

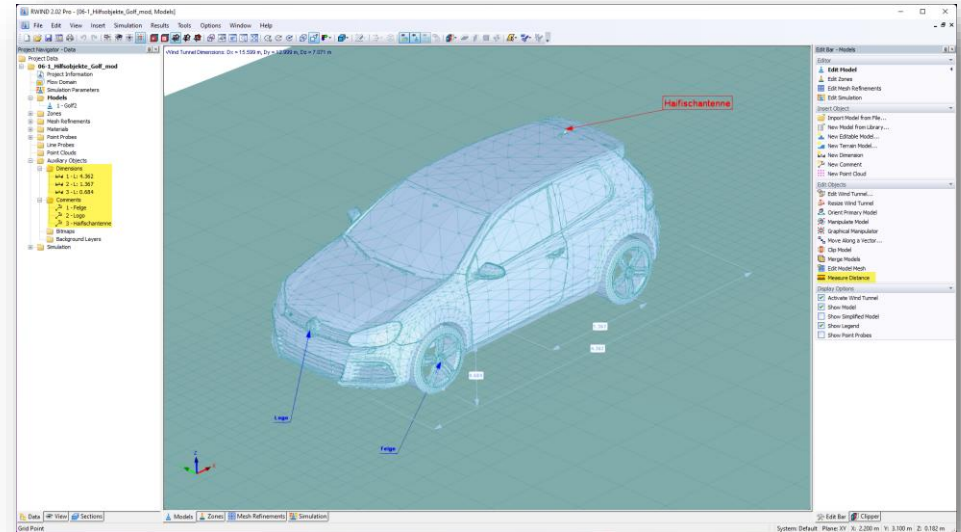
- Model area
- Projected area in YZ and XY
 - Primary Model
 - Simplified Model
- Drag coefficient downwind from the primary model





New Auxiliary Objects

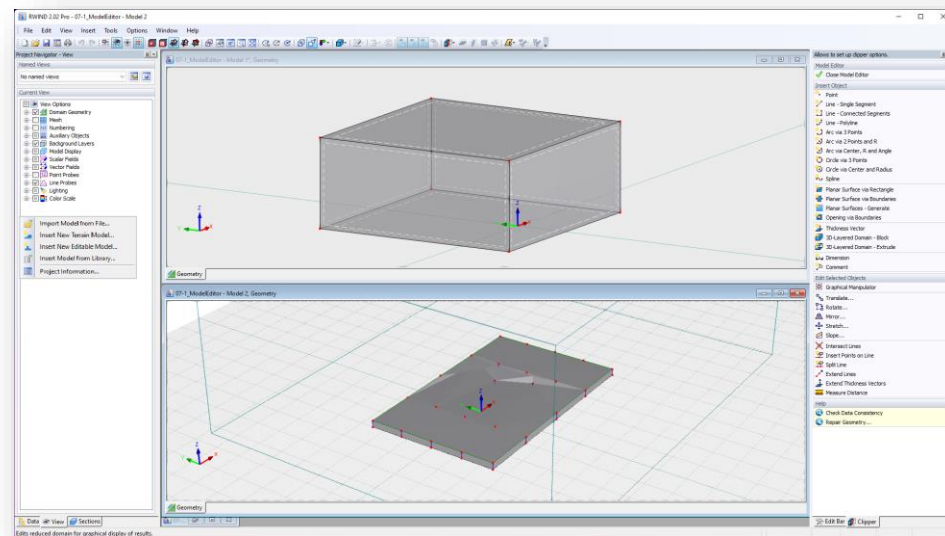
- Dimensions
 - on model objects or on the mesh surface
- Comments
 - free or attached to objects
- Measure Distance
 - Polyline
 - Distance between points on model objects or on the mesh surface





Graphical Model Editor

- Create Model
 - Model topology based on graphic objects
 - Nodes, Curves, Surfaces and Solids
 - Modelling Tools
 - Copy, Rotate, Mirror ...
- Create Terrain
 - Terrain topology based on graphic objects and thickness vectors



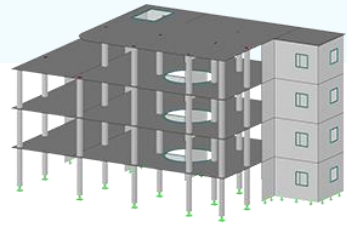


— Prospect

- Import experimental wind tunnel test data
 - Validate investigations
 - Transfer test data to RFEM 6 as well
- Time step calculation and transfer to RFEM 6
- Envelope of the results
 - For time steps or wind directions

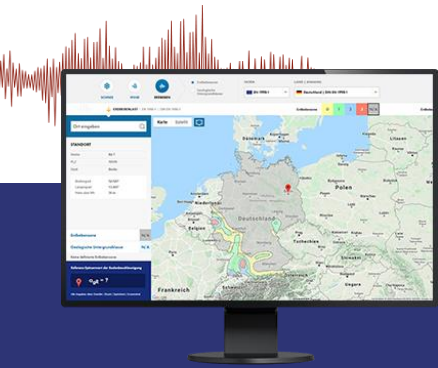


Free Online Services



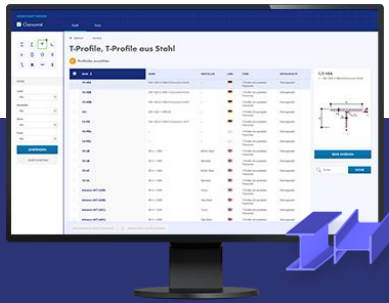
Geo-Zone Tool

Dlubal Software provides an online tool with snow, wind and seismic zone maps.



Cross-Section Properties

With this free online tool, you can select standardized sections from an extensive section library, define parametrized cross-sections and calculate its cross-section properties.



FAQs & Knowledge Base

Access frequently asked questions commonly submitted to our customer support team and view helpful tips and tricks articles to improve your work.



Models to Download

Download numerous example files here that will help you to get started and become familiar with the Dlubal programs.





Free Online Services

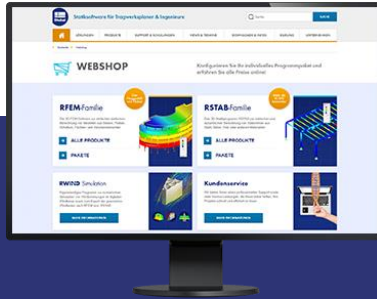
Youtube Channel - Webinars, Videos

Videos and webinars about the structural engineering software.



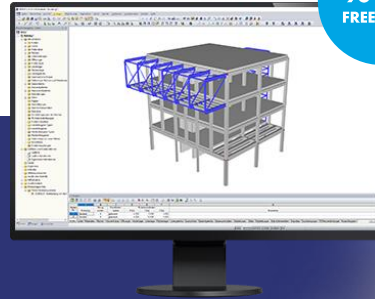
Webshop with Prices

Configure your individual program package and get all prices online!



Trial Licenses

The best way how to learn using our programs is to simply test them for yourself. Download a 90-day free trial version of our structural analysis & design software.



90-DAY FREE TRIAL



We offer free support via email and chat



— Get Further Details About Dlubal



Visit website
www.dlubal.com

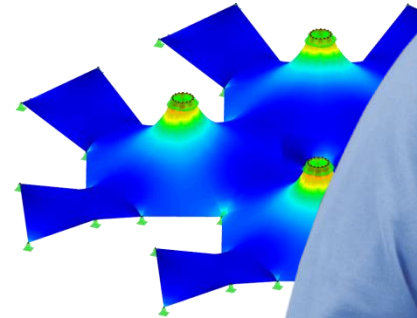
- Videos and recorded webinars
- Newsletters
- Events and conferences
- Knowledge Base articles



See Dlubal Software in action in a webinar



Download free trial license



Dlubal Software GmbH
Am Zellweg 2,
93464 Tiefenbach, Germany

Phone: +49 9673 9203-0
E-mail: info@dlubal.com



www.dlubal.com